

RENEW. REFLECT. PROTECT. RENEW. REFLECT. PROTECT.

# KOOL SEAL

ROOF RESTORATION COATINGS

# PRODUCT PORTFOLIO





# THE KOOL SEAL EVOLUTION



1906



Acorn Chemical and Refining founded in Cleveland, Ohio ( Later renamed KST Coatings)

1920



Kool Seal brand introduced a line of roof coatings to address the needs of the residential marketplace

1954



KST introduced first aluminum reflective roof coating

1984



KST introduced first elastomeric reflective roof coating

2004



Kool Seal Dura Lite introduced as an innovative light-weight roof coating

2005



KST Coatings acquired by Sherwin Williams

2006



Built on a solid legacy of excellence, KST Coatings celebrated its 100th year in the roof coating market

2014



Kool Seal goes through brand overhaul and introduces new rebranding

2016

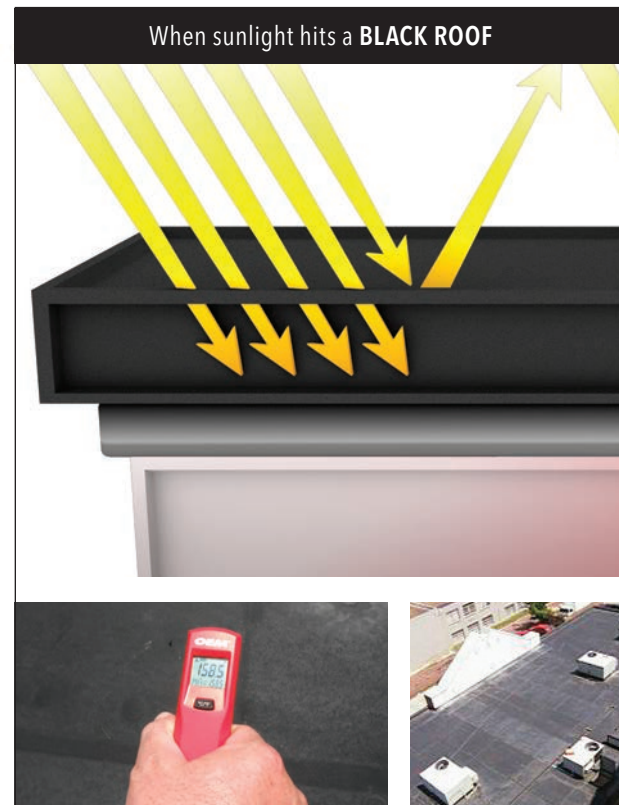


Kool Seal introduced new line of silicone roof coatings called Kool Seal Tundra™ Rubberized Silicone Roof Coating

# COOL ROOF TECHNOLOGY

## WHAT IS A COOL ROOF?

- A roof that reflects the sun's heat and releases absorbed heat back into the atmosphere
- The roof surface temperature is usually only slightly higher than the air temperature

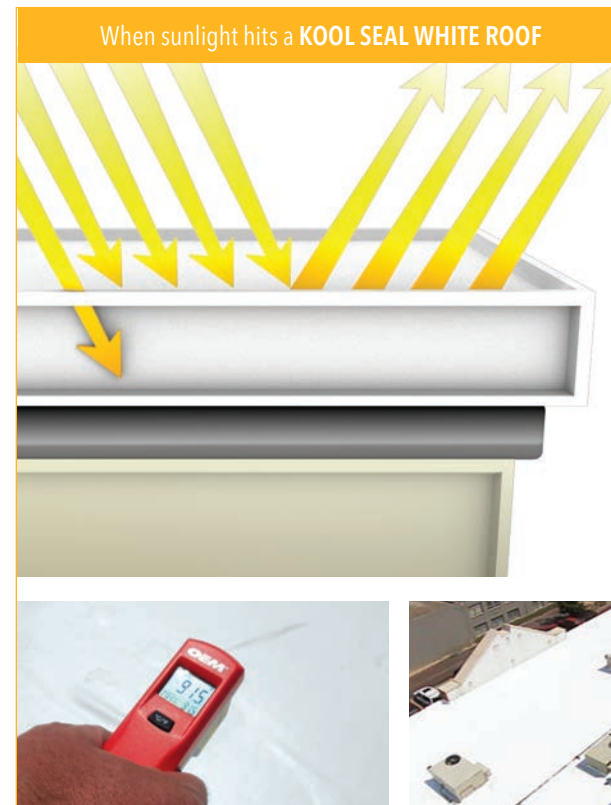


### ROOF TEMPERATURE: 158.5° F

In full sun, the surface temperature of a black roof may rise as much as 90°F, reaching midday temperatures of 150–190°F. This places a heavy strain on the building's air conditioning unit, as it struggles to keep temperatures comfortable within the facility.

## BENEFITS OF COOL ROOFS INCLUDE:

- Increased occupant comfort, especially during hot summer months
- Reduced HVAC system use, resulting in energy savings
- Reduction in Heat Island Effect and smog
- Compliance with code and green building programs
- Peak energy savings and electrical grid stability



### ROOF TEMPERATURE: 91.5° F

A white reflective roof coating typically increases only 10–25°F above ambient temperature in full sun. KOOL SEAL ROOF RESTORATION COATINGS products offer superior reflective capabilities, helping to keep the roof's surface cooler and slashing cooling costs by at least 30%.

# FEATURES AND BENEFITS

## NO TEAR OFFS

- **NO DISRUPTION TO OCCUPANTS.** With KOOL SEAL ROOF RESTORATION COATINGS, there is no need to close the building during installation. The non-toxic formulation means no disruption to occupants and no interruption of business.
- **LIGHTWEIGHT SOLUTION.** Unlike traditional roof replacement, KOOL SEAL ROOF COATINGS provide a lightweight solution to roofing needs. It's ounces, not pounds, per square foot.

## EXTEND THE LIFE OF YOUR ROOF

- **LONGER BUILDING LIFE CYCLE.** KOOL SEAL ROOF RESTORATION COATINGS are installed onto existing roofs to extend the service life of the facility.
- **GREAT WEATHERABILITY.** KOOL SEAL ROOF RESTORATION COATINGS are resistant to blistering, chalking, checking, cracking, and flaking –protecting the roof from further weathering and degradation

## SUSTAINABLE SOLUTIONS

- **ENVIRONMENTALLY RESPONSIBLE.** The formulations of KOOL SEAL ROOF RESTORATION COATINGS do not require hot kettles or flames during installation. It's a safer process, and the environmental benefits are significant.
- **LOWER ROOF TEMPERATURES.** Highly reflective white coatings reflect 85% of the sun's radiant heat, dramatically lowering the temperature of the underlying roof and preventing further degradation.

## SEAMLESS WATERPROOFING

- **PROVEN PERFORMANCE.** KOOL SEAL ROOF RESTORATION COATINGS are fully adhered and monolithic (seamless), protecting the investment and providing maximum durability.

## ENERGY & UTILITY SAVINGS

- **SIGNIFICANT ENERGY SAVINGS.** According to EnergyStar.gov, having a white, reflective roof reduces the roof's surface temperature by up to 100°F (black to white) significantly decreasing the amount of heat transferred into the building and reducing peak cooling demands. Higher reflectivity = lower energy consumption and lower cooling costs.
- **COST-SAVING INSTALLATION.** KOOL SEAL ROOF RESTORATION COATINGS are typically easier to install and maintain than a conventional tear-off roof and also eliminate unnecessary construction waste. This means such projects generally cost a fraction of the price of a new roof installation.
- **TAX BENEFITS.** Because roof maintenance jobs are often deductible in the first year while most total roof replacements are not, some building owners realize a tax benefit when using KOOL SEAL ROOF RESTORATION COATINGS.

- **UTILITY REBATES.** Some utility companies offer rebates to building owners who conserve energy by using white reflective roof coatings. Local utility companies can provide more details about their energy rebate programs. Further details can be found at [www.dsireusa.org](http://www.dsireusa.org).

# INNOVATION

## ADVANCED TECHNOLOGY



Weathering Farm, Medina, OH

KOOL SEAL ROOF RESTORATION COATINGS leads the industry in innovation, quality, and cutting-edge technology, with an investment in research and development that represents the largest research effort in North America devoted exclusively to coatings innovation and development. With staff scientists, chemists and engineers located in the Ohio research centers, KOOL SEAL ROOF RESTORATION COATINGS's Commercialization, Emerging Technologies, and Raw Materials/Analytics labs work hard to ensure that KOOL SEAL ROOF RESTORATION COATINGS products set the industry standard.

## KOOL SEAL ROOF RESTORATION COATINGS MEMBER ORGANIZATIONS:



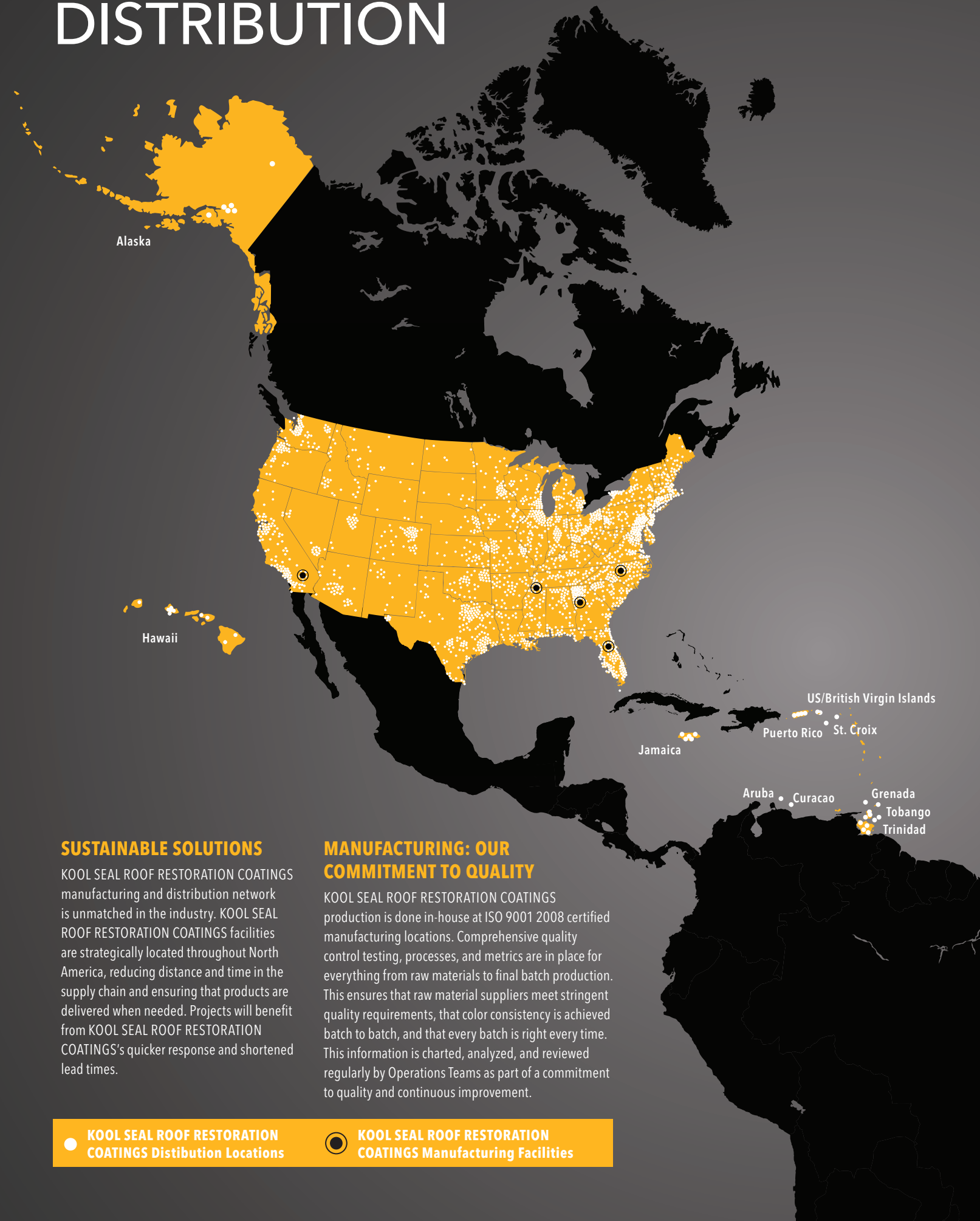
## RESEARCH & DEVELOPMENT



Weathering Farm, Medina, OH

KOOL SEAL ROOF RESTORATION COATINGS's state-of-the-art research and development facilities are unparalleled. Every KOOL SEAL ROOF RESTORATION COATINGS product undergoes rigorous testing before it reaches the market. Product concept testing and field technical trials are performed exhaustively before product launch at the weathering farms in Medina, Ohio and Ocala, Florida.

# DISTRIBUTION



## SUSTAINABLE SOLUTIONS

KOOL SEAL ROOF RESTORATION COATINGS manufacturing and distribution network is unmatched in the industry. KOOL SEAL ROOF RESTORATION COATINGS facilities are strategically located throughout North America, reducing distance and time in the supply chain and ensuring that products are delivered when needed. Projects will benefit from KOOL SEAL ROOF RESTORATION COATINGS's quicker response and shortened lead times.

## MANUFACTURING: OUR COMMITMENT TO QUALITY

KOOL SEAL ROOF RESTORATION COATINGS production is done in-house at ISO 9001 2008 certified manufacturing locations. Comprehensive quality control testing, processes, and metrics are in place for everything from raw materials to final batch production. This ensures that raw material suppliers meet stringent quality requirements, that color consistency is achieved batch to batch, and that every batch is right every time. This information is charted, analyzed, and reviewed regularly by Operations Teams as part of a commitment to quality and continuous improvement.

- KOOL SEAL ROOF RESTORATION COATINGS Distribution Locations
- KOOL SEAL ROOF RESTORATION COATINGS Manufacturing Facilities

# REFLECTIVE WHITE ROOF COATING



PRODUCT NAME	Kool Seal Tundra Rubberized Silicone White Roof Coating	Premium Elastomeric Roof Coating 12YR	Premium Elastomeric Roof Coating 10 YR	Elastomeric Roof Coating 7 YR	Elastomeric Roof Coating 5 YR
WARRANTY	Limited Lifetime Warranty	12 Years	10 Years	7 Years	5 Years
TECHNOLOGY	Silicone	100% Acrylic	100% Acrylic	100% Acrylic	100% Acrylic
FEATURES & BENEFITS	Ponding water resistance High solids Superior finish with excellent leveling Outstanding adhesion to most roofing material	Meets ASTM D 6083 and Title 24 Premium performance that renews most roofing types Reflects heat and harmful UV rays Protects against the elements, extending the life of the roof	Renews most roofing substrates Expands and contracts with roof Long lasting protection and reflectivity	Renews most roofing substrates Reflects heat and protects against the elements	Economy Grade Reflects heat and harmful UV rays
RECOMMENDED SUBSTRATES	Metal, single ply, smooth BUR, APP, SBS, modified bitumen, polyurethane foam, cured concrete, existing asphaltic and elastomeric roof coatings and other approved surfaces. Not for use on roof shingles	Metal, single ply, smooth BUR, modified bitumen, polyurethane foam, concrete, EPDM, Hypalon, existing asphaltic and elastomeric roof coatings. Not for use on roof shingles	Metal, single ply, smooth BUR, modified bitumen, polyurethane foam, concrete, EPDM, Hypalon, existing asphaltic and elastomeric roof coatings. Not for use on roof shingle	Metal, single ply, smooth BUR, modified bitumen, polyurethane foam, concrete, EPDM, Hypalon, existing asphaltic and elastomeric roof coatings. Not for use on roof shingles	Metal, single ply, smooth BUR, modified bitumen, polyurethane foam, concrete, EPDM, Hypalon, existing asphaltic and elastomeric roof coatings. Not for use on roof shingles
PART NUMBER	KS0064900 / 1-Gallon, 5-Gallon Pail, 55-Gallon Drum	KS0063900 / 1-Gallon, 5-Gallon Pail	KS0063600 / 1-Gallon, 5-Gallon Pail, 55-Gallon Drum	KS0063300 White / 1-Gallon, 5-Gallon Pail, 55-Gallon Drum KS0063320 Gray / 5-Gallon Pail KS0063325 Black / 5-Gallon Pail	KS0063000 / 5-Gallon Pail
COLOR	White	White	White	White, Gray, Black	White
COVERAGE RATE PER GALLON	Apply 1 coat at 50 sq/ft per gallon. If applying in 2 coats, apply each coat at 1 gallon per 100 sq/ft. Finished coverage will be the same, at covering 250 sq/ft of roof surface per 5 gallon bucket	Apply at 50-100 sq ft per gallon per coat. Rough/porous surfaces will require additional coating. Two coats recommended	Apply at 50-100 sq ft per gallon per coat. Rough/porous surfaces will require additional coating. Two coats recommended	Apply at 50-100 sq ft per gallon per coat. Rough/porous surfaces will require additional coating. Two coats recommended	Apply at 50-100 sq ft per gallon per coat. Rough/porous surfaces will require additional coating. Two coats recommended
DRYING TIME	Rain safe: 60 minutes. Dry to recoat 6 hours, Full cure 72 Hours	Exposure to rain or heavy dew : 4-6 hours Between coats and before foot traffic : 24 hours	Exposure to rain or heavy dew : 4-6 hours Between coats and before foot traffic : 24 hours	Exposure to rain or heavy dew : 4-6 hours Between coats and before foot traffic : 24 hours	Exposure to rain or heavy dew : 4-6 hours Between coats and before foot traffic : 24 hours
APPLICATION	Roof Brush, Notched Squeegee, Nap Roller	Medium Nap Roller, Broom, Spray	Medium Nap Roller, Broom, Spray	Medium Nap Roller, Broom, Spray	Medium Nap Roller, Broom, Spray
CLEAN UP	Virgin mineral spirits	Warm, soapy water	Warm, soapy water	Warm, soapy water	Warm, soapy water

\*\*Repair all cracks, breaks, open seams and other imperfections with Kool Seal® Storm Patch Acrylic Patching Cement and Kool Seal Storm Patch Patching Fabric.  
Apply Kool Seal Storm Patch Acrylic Rust Primer to existing rusted areas

# BASECOATS AND PRIMERS



PRODUCT NAME	Kool Seal Tundra Rubberized Silicone Gray Roof Coating	Elastomeric Base Coat Gray Roof Coating	Acrylic Rust Primer	Acrylic Concrete Primer
WARRANTY	Limited Lifetime Warranty	Satisfaction Guarantee	Satisfaction Guarantee	Satisfaction Guarantee
TECHNOLOGY	Silicone	100% Acrylic	Acrylic	Acrylic
FEATURES & BENEFITS	Ponding water resistance High solids Superior finish with excellent leveling Outstanding adhesion to most roofing material	Provides maximum adhesion to all surfaces Provides an excellent surface for application of Kool Seal Elastomeric Finish Coats	Corrosion resistant primer for metal roofs Excellent adhesion to difficult surfaces	Highly alkali and efflorescence resistant primer that can be applied to concrete surfaces with a pH of 6 to 13
RECOMMENDED SUBSTRATES	Metal, single ply, smooth BUR, APP, SBS, modified bitumen, polyurethane foam, cured concrete, existing asphaltic and elastomeric roof coatings and other approved surfaces. Not for use on roof shingles	Metal, single ply, smooth BUR, modified bitumen, polyurethane foam, concrete, EPDM, Hypalon, existing asphaltic and elastomeric roof coatings. Not for use on roof shingles	All types of metal surfaces, including iron and steel where corrosion is a problem	All concrete surfaces
PART NUMBER	KS0064920 / 5-Gallon Pail, 55-Gallon Drum	KS0034600 / 1-Gallon, 5-Gallon Pail	KS0034800 / 1-Gallon, 5-Gallon Pail	KS0034900 / 5-Gallon Pail
COLOR	Gray	Gray	250 sq. ft / gallon	White
COVERAGE RATE PER GALLON	Apply 1 coat at 50 sq/ft per gallon. If applying in 2 coats, apply each coat at 1 gallon per 100 sq/ft. Finished coverage will be the same, at covering 250 sq/ft of roof surface per 5 gallon bucket	Apply at 50-100 sq ft per gallon per coat. Rough/porous surfaces will require additional coating.	Exposure to rain or heavy dew: 4-6 hours Between coats and before foot traffic: 24 hours	200 sq. ft / Gallon
DRYING TIME	Rain safe: 60 minutes. Dry to recoat 6 hours, Full cure 72 Hours	Exposure to rain or heavy dew : 4-6 hours Between coats and before foot traffic : 24 hours	Airless spray, low nap roller or broom at appropriate coverage rate	Exposure to rain or heavy dew : 4 hours Between coats and before foot traffic : 24 hours
APPLICATION	Roof Brush, Notched Squeegee, Nap Roller	Medium Nap Roller, Broom, Spray	Warm, soapy water	Airless spray, low nap roller, broom
CLEAN UP	Virgin mineral spirits	Warm, soapy water	Warm, soapy water	Warm, soapy water

# REFLECTIVE ALUMINUM ROOF COATINGS

# ASPHALT ROOF COATINGS



PRODUCT NAME	Premium Fibred Aluminum Roof Coating	Fibred Aluminum Roof Coating	Premium Non-Fibred Aluminum Roof Coating	Fibred Roof Coating	Non-Fibred Roof Coating
<b>WARRANTY</b>	5 Years	3 Years	5 Years	Satisfaction Guarantee	Satisfaction Guarantee
<b>TECHNOLOGY</b>	Asphalt	Asphalt	Asphalt	Asphalt	Asphalt
<b>FEATURES &amp; BENEFITS</b>	Premium Grade reinforced with fiber for durability Reflects heat and harmful UV rays Protects against the elements, extending the life of the roof	Economy Grade Reinforced with fiber for durability Reflects heat and harmful UV rays Protects against the elements, extending the life of the roof	Premium Grade Reflects heat and harmful UV rays Protects against the elements, extending the life of the roof	Restores and rejuvenates dried out asphalt surfaces such as smooth surface built-up and modified bitumen roofs.	Restores and rejuvenates dried out asphalt surfaces such as smooth surface built-up and modified bitumen roofs.
<b>RECOMMENDED SUBSTRATES</b>	Metal, aged aluminum coatings, rolled roofing, asphalt and modified bitumen. Not for use over coal tar surfaces	Metal, aged aluminum coatings, rolled roofing, asphalt and modified bitumen. Not for use over coal tar surfaces.	Metal, aged aluminum coatings, rolled roofing, asphalt and modified bitumen. Not for use over coal tar surfaces	Asphalt surfaces such as smooth surface built-up and modified bitumen roofs. Not for use over coal tar surfaces	Asphalt surfaces such as smooth surface built-up and modified bitumen roofs. Not for use over coal tar surfaces
<b>PART NUMBER</b>	KS0024600 / 1-Gallon, 5-Gallon Pail	KS0024300 / 1-Gallon, 5-Gallon Pail	KS0023600 / 1-Gallon, 5-Gallon Pail	KS0024000 / 5-Gallon Pail	KS0023000 / 5-Gallon Pail
<b>COLOR</b>	Silver	Silver	Silver	Black	Black
<b>COVERAGE RATE PER GALLON</b>	Apply at 50-100 sq ft per gallon per coat. Two coats recommended	Apply at 50-100 sq ft per gallon per coat. Two coats recommended	Apply at 250-400 sq ft per gallon per coat. Two coats recommended	Apply at 50-100 sq. ft. per gallon per coat. Two coats recommended	Apply at 50-100 sq. ft. per gallon per coat. Two coats recommended
<b>DRYING TIME</b>	Exposure to rain or heavy dew : 4-6 hours Between coats and before foot traffic : 3-5 days	Exposure to rain or heavy dew : 4-6 hours Between coats and before foot traffic : 3-5 days	Exposure to rain or heavy dew : 4-6 hours Between coats and before foot traffic : 3-5 days	Exposure to rain or heavy dew : 12 hours Between coats and before foot traffic : 24-72 hours	Exposure to rain or heavy dew : 12 hours Between coats and before foot traffic : 24-72 hours
<b>APPLICATION</b>	Airless spray, low nap roller or broom	Airless spray, low nap roller or broom	Airless spray, low nap roller or broom	Roof brushes, squeegee or heavy duty spray equipment	Roof brushes, squeegee or heavy duty spray equipment
<b>CLEAN UP</b>	Mineral Spirits	Mineral Spirits	Mineral Spirits	Mineral Spirits	Mineral Spirits

# PATCHING PRODUCTS



PRODUCT NAME	Asphalt Patch & Coat	Wet/Dry Patching Cement Black	Premium Rubberized Wet/Dry Patching Cement Black	Acrylic Patching Cement White	Wet/Dry Patching Cement Clear	Premium Wet/Dry Patching Cement Clear	Storm Patch® Rubberized Leak Sealer	Storm Patch® Flexx Sealer Instant Leak Sealer	Storm Patch® 4" Patching Fabric
WARRANTY	Satisfaction Guarantee	Satisfaction Guarantee	Satisfaction Guarantee	Satisfaction Guarantee	Satisfaction Guarantee	Satisfaction Guarantee	Satisfaction Guarantee	Satisfaction Guarantee	Satisfaction Guarantee
TECHNOLOGY	Asphalt	Asphalt	Asphalt	Acrylic	Asphalt	Asphalt	N/A	N/A	N/A
FEATURES & BENEFITS	<p>Water resistant roofing solution resists cracking and UV degradation</p> <p>Applies easily with a brush for patching or can be rolled to coat roofs</p> <p>Water-based for easy clean up</p>	<p>Suited for asphalt-based roofing substrates</p> <p>Seals quickly, will not pull apart or lose it bond, remains soft and pliable.</p> <p>Resists temperature change</p> <p>Can be applied to wet or dry surfaces, even underwater</p>	<p>Premium performance that seals quickly, will not pull apart or lose it bond, remains soft and pliable.</p> <p>Suited for asphalt-based roof substrates</p> <p>Resists temperature change</p> <p>Can be applied to wet or dry surfaces, even underwater</p>	<p>Blend of acrylic resin and reinforcing materials designed to stop leaks in damp or dry surface conditions</p> <p>Seals out water and resists mildew and weathering when cured</p>	<p>Suited for asphalt-based roofing substrates</p> <p>Seals quickly, will not pull apart or lose it bond, remains soft and pliable.</p> <p>Resists temperature change</p> <p>Can be applied to wet or dry surfaces, even underwater</p>	<p>Premium Performance that seals quickly, will not pull apart or lose it bond, remains soft and pliable.</p> <p>Suited for asphalt-based roof substrates</p> <p>Resists temperature change</p> <p>Can be applied to wet or dry surfaces, even underwater</p>	<p>Leak-free seal</p> <p>Prevents moisture penetration and corrosion</p>	<p>Stops leaks, seals instantly</p> <p>Never cracks, peels or shrinks</p> <p>Remains flexible</p>	<p>Seals out moisture and prevents leaks on roofs</p> <p>Prevents cracks and splitting over seams</p> <p>Easy to apply on all surfaces</p>
RECOMMENDED SUBSTRATES	All asphaltic surfaces, rolled roofing, metal, slate, asphalt/fiberglass shingles, chimney & pipe flashings, metal & wood gutters, composition roofs and driveway cracks	Metal, asphalt, smooth BUR, modified bitumen, rolled roofing, asphalt/fiberglass shingles, chimney & pipe flashings. Do NOT use on shingle-ply membranes	Metal, asphalt, smooth BUR, modified bitumen, rolled roofing, asphalt/fiberglass shingles, chimney & pipe flashings. Do NOT use on shingle-ply membranes	Patching cracks, seams, holes & breaks around metal seams, parapet walls, chimney flashings, gutters, vents, stacks, skylights and air conditioners	Metal, asphalt, smooth BUR, modified bitumen, rolled roofing, asphalt/fiberglass shingles, chimney & pipe flashings. Do NOT use on shingle-ply membranes	Metal, asphalt, smooth BUR, modified bitumen, rolled roofing, asphalt/fiberglass shingles, chimney & pipe flashings. Do NOT use on shingle-ply membranes	Metal, aluminum, masonry, plastic, asphalt/fiberglass shingles, cedar shake, acrylic roof coatings, cement and shake	Metal, asphalt, tar, fiberglass, plastic, rubber rv roofs and more	Seams, cracks joints, flashings, roof vents or where two unlike surfaces come together
PART NUMBER	KS0081100 / 10 oz cartridge, 1-Gallon	KS0083300 / 10 oz cartridge, 1-Gallon	KS0083600 / 10 oz cartridge, 1-Gallon	KS0085100 / 10.5 oz cartridge, 1-Gallon	KS0083350 / 10 oz cartridge	KS0083650 / 10 oz cartridge	KS0065100-18 / 12 oz aerosol KS0065125-18 / 12 oz aerosol KS0065150-18 / 12 oz aerosol	KS0018103-99 / 2" x 3' roll KS0018110-99 / 2" x 10' roll	KS0018304-99 / 4" x 50' roll
COLOR	Black	KS0083300 / Black	KS0083600 / Black	White	KS0083350 / Clear	KS0083650 / Clear	KS0065100-18 White KS0065125-18 / Black KS0065150-18 / Clear	Gray	White
COVERAGE RATE PER GALLON	For repairs, an overlayment thickness of 1/16" -1/8" is sufficient When used for resurfacing, spread at 2-4 gallons per 100 sq ft	6-24 linear feet per cartridge depending on joint size 10-15 sq. ft / gallon (per coat)	6-24 linear feet per cartridge depending on joint size 10-15 sq. ft / gallon (per coat)	Will vary considerably depending on the type of surface coated and depth of cracks being repaired. In general, an overlayment thickness of 1/16 -1/8" is sufficient	6-24 linear feet per cartridge depending on joint size 10-15 sq. ft / gallon (per coat)	6-24 linear feet per cartridge depending on joint size 10-15 sq. ft / gallon (per coat)	Up to 15 sq. ft	KS0018103-99 / 3 feet KS0018110-99 / 10 feet	50 linear feet
DRYING TIME	Exposure to rain or heavy dew : 12 hours Between coats and before foot traffic : 2-4 hours Before elastomeric or aluminum coatings: 30 days	Between coats : 24 hours Cures: 1-3 days"	Between coats : 24 hours Cures: 1-3 days	Exposure to rain or heavy dew : 4-6 hours Between coats and before foot traffic : 24 hours minimum	Between coats : 24 hours Cures: 1-3 days	Between coats : 24 hours Cures: 1-3 days	To Touch: 10 minutes Can be coated with Kool Seal Elastomeric Coatings in 24 hours	N/A	N/A
APPLICATION	Roof brush or heavy nap roller	Trowel or putty knife	Trowel or putty knife	Roof Brush or stiff bristled paint brush	Trowel or putty knife	Trowel or putty knife	N/A	N/A	N/A
CLEAN UP	Warm, soapy water while wet. Mineral spirits when dry	Mineral Spirits	Mineral Spirits	Warm, soapy water	Mineral Spirits	Mineral Spirits	Mineral Spirits	N/A	N/A



# ASPHALT EMULSION DRIVEWAY SEALERS



PRODUCT NAME	Premium Emulsion Driveway Sealer & Filler -7 Year	Emulsion Driveway Sealer & Filler -5 Year	Emulsion Driveway Sealer-3 Year	Pourable Driveway Crack Filler	Trowel Grade Driveway Crack Filler	
TECHNOLOGY	Asphalt Emulsion		Asphalt Emulsion	Asphalt Emulsion	Asphalt	Asphalt
FEATURES & BENEFITS	<ul style="list-style-type: none"> <li>Provides a watertight, flexible seal for asphalt surfaces</li> <li>Rejuvenates dried out asphalt surfaces</li> <li>Protects against the elements, extending the life of the surface</li> <li>Fills surface cracks</li> <li>Polymer modified for exceptional performance</li> </ul>	<ul style="list-style-type: none"> <li>Provides a watertight, flexible seal for asphalt surfaces</li> <li>Rejuvenates dried out asphalt surfaces</li> <li>Protects against the elements, extending the life of the surface</li> <li>Fills surface cracks</li> </ul>	<ul style="list-style-type: none"> <li>Provides a watertight, flexible seal for asphalt surfaces</li> <li>Rejuvenates dried out asphalt surfaces</li> <li>Protects against the elements, extending the life of the surface</li> </ul>	<ul style="list-style-type: none"> <li>Provides a watertight, flexible seal for asphalt and concrete surfaces</li> <li>Fills cracks up to 1/2" wide</li> <li>Protects against the elements, extending the life of the surface</li> </ul>	<ul style="list-style-type: none"> <li>Provides a watertight, flexible seal for asphalt and concrete surfaces</li> <li>Fills cracks up to 1" wide</li> <li>Protects against the elements, extending the life of the surface</li> </ul>	
RECOMMENDED SUBSTRATES	Asphalt Driveway Surfaces Do NOT apply to concrete		Asphalt Driveway Surfaces Do NOT apply to concrete	Asphalt Driveway Surfaces Do NOT apply to concrete	Fills cracks in asphalt & concrete joints Driveways & parking areas up to 1/2" width	Fills cracks in asphalt & concrete joints Driveways & parking areas up to 1" width
PART NUMBER	KS0073900	KS0073600	KS0073300	KS0075100	KS0075200	
SIZE	5-Gallon Pail, 55-Gallon Drum		5-Gallon Pail, 55-Gallon Drum	1-Gallon	1-Gallon	
COLOR	Black	Black	Black	Black	Black	
WARRANTY	7 Years	5 Years	3 Years	Satisfaction Guarantee	Satisfaction Guarantee	

# SKU INFORMATION

REFLECTIVE WHITE ROOF COATINGS				
SKU DESCRIPTION	SKU NUMBER	SIZE	SIZE DESCRIPTION	QTY/CASE
KS Tundra Rubberized Silicone White Roof Coating	KS0064900	16 GAL	1 GALLON	4
KS Tundra Rubberized Silicone White Roof Coating	KS0064900	20 PAIL	5 GALLON PAIL	1
KS Tundra Rubberized Silicone White Roof Coating	KS0064900	27 DRUM	55 GALLON DRUM	1
KS Elastomeric White Roof Coating (5YR)	KS0063000	20 PAIL	4.75 GALLON PAIL	1
KS Elastomeric White Roof Coating (7YR)	KS0063300	16 GAL	115 OZ/ 0.9 GALLON	4
KS Elastomeric White Roof Coating (7YR)	KS0063300	20 PAIL	4.75 GALLON PAIL	1
KS Elastomeric Roof Coating (7YR)	KS0063300	27 DRUM	55 GALLON DRUM	1
KS Elastomeric Black Roof Coating (7YR)	KS0063325	20 PAIL	4.75 GALLON PAIL	1
KS Elastomeric Gray Roof Coating (7YR)	KS0063320	20 PAIL	4.75 GALLON PAIL	1
KS Premium Elastomeric White Roof Coating (10YR)	KS0063600	16 GAL	115 OZ/ 0.9 GALLON	4
KS Premium Elastomeric White Roof Coating (10YR)	KS0063600	20 PAIL	4.75 GALLON PAIL	1
KS Premium Elastomeric White Roof Coating (10YR)	KS0063600	27 DRUM	55 GALLON DRUM	1
KS Premium Elastomeric White Roof Coating (12YR)	KS0063900	16 GAL	115 OZ/ 0.9 GALLON	4
KS Premium Elastomeric White Roof Coating (12YR)	KS0063900	20 PAIL	4.75 GALLON PAIL	1

ALUMINUM ROOF COATINGS				
SKU DESCRIPTION	PRODUCT NUMBER	SIZE CODE	SIZE DESCRIPTION	QTY/CASE
KS Fibered Aluminum Roof Coating (3YR)	KS0024300	16 GAL	115 OZ/ 0.9 GALLON	4
KS Fibered Aluminum Roof Coating (3YR)	KS0024300	20 PAIL	4.75 GALLON PAIL	1
KS Premium Fibered Aluminum Roof Coating (5YR)	KS0024600	16 GAL	115 OZ/ 0.9 GALLON	4
KS Premium Fibered Aluminum Roof Coating (5YR)	KS0024600	20 PAIL	4.75 GALLON PAIL	1
KS Premium Non-Fibered Aluminum Roof Coating (5YR)	KS0023600	16 GAL	115 OZ/ 0.9 GALLON	4
KS Premium Non-Fibered Aluminum Roof Coating (5YR)	KS0023600	20 PAIL	4.75 GALLON PAIL	1

ASPHALTIC ROOF COATINGS				
SKU DESCRIPTION	PRODUCT NUMBER	SIZE CODE	SIZE DESCRIPTION	QTY/CASE
KS Fibered Roof Coating	KS0024000	20 PAIL	4.75 GALLON PAIL	1
KS Non-Fibered Roof and Foundation Coating	KS0023000	20 PAIL	4.75 GALLON PAIL	1

PATCH & REPAIR COATINGS				
SKU DESCRIPTION	SKU NUMBER	SIZE	SIZE DESCRIPTION	QTY/CASE
KS Asphalt Patch & Coat	KS0081100	16 GAL	115 OZ / 0.9 GALLON	4
KS Asphalt Patch & Coat	KS0081100	01 CART	10 FLOZ CARTRIDGE	12
KS Storm Patch Wet/Dry Patching Cement Black	KS0083300	16 GAL	115 OZ/ 0.9 GALLON	4
KS Storm Patch Wet/Dry Patching Cement Black	KS0083300	01 CART	10 FLOZ CARTRIDGE	12
KS Storm Patch Wet/Dry Patch & Seal Clear	KS0083350	01 CART	10 FLOZ CARTRIDGE	12
KS Storm Patch Premium Rubberized Wet/Dry Patching Cement Black	KS0083600	16 GAL	115 OZ/ 0.9 GALLON	4
KS Storm Patch Premium Rubberized Wet/Dry Patching Cement Black	KS0083600	01 CART	10 FLOZ CARTRIDGE	12
KS Storm Patch Premium Wet/Dry Patch & Seal Clear	KS0083650	01 CART	10 FLOZ CARTRIDGE	12
KS Storm Patch Acrylic Patch & Seal White	KS0085100	01 CART	10 FLOZ CARTRIDGE	12
KS Storm Patch Acrylic Patching Cement White	KS0085100	16 GAL	115 OZ/ 0.9 GALLON	4

PATCH & REPAIR FABRICS AND TAPES				
SKU DESCRIPTION	PRODUCT NUMBER	SIZE CODE	SIZE DESCRIPTION	QTY/CASE
KS Storm Patch Flexx Sealer 2"X10'	KS0018110	99 ROLL	2" x 10'	16
KS Storm Patch Flexx Sealer 2"X3'	KS0018103	99 ROLL	2" x 3'	12
KS Storm Patch Black Patching Tape	KS0018225	99 ROLL	2" x 42"	12
KS Storm Patch White Patching Tape	KS0018200	99 ROLL	2" x 42"	12
KST Storm Patch 4" Polyester Fabric	KS0018304	99 ROLL	4" x 50'	12

PATCH & REPAIR AEROSOLS				
SKU DESCRIPTION	PRODUCT NUMBER	SIZE CODE	SIZE DESCRIPTION	QTY/CASE
KS Storm Patch Aerosol White	KS0065100	18 AERO	12 OZ	6
KS Storm Patch Aerosol Black	KS0065125	18 AERO	12 OZ	6
KS Storm Patch Aerosol Clear	KS0065150	18 AERO	12 OZ	6

BASECOATS & PRIMERS				
SKU DESCRIPTION	PRODUCT NUMBER	SIZE CODE	SIZE DESCRIPTION	QTY/CASE
KS Tundra Rubberized Silicone Gray Roof Coating	KS0064920	20 PAIL	5 GALLON PAIL	1
KS Tundra Rubberized Silicone Gray Roof Coating	KS0064920	27 DRUM	55 GALLON DRUM	4
KS Elastomeric Base Coat Gray Roof Coating	KS0034600	16 GAL	115 OZ / 0.9 GALLON	4
KS Elastomeric Base Coat Gray Roof Coating	KS0034600	20 PAIL	4.75 GALLON PAIL	1
KS Storm Patch Acrylic Rust Primer	KS0034800	16 GAL	115 OZ / 0.9 GALLON	4
KS Storm Patch Acrylic Rust Primer	KS0034800	20 PAIL	4.75 GALLON PAIL	1
KS Acrylic Concrete Primer	KS0034900	20 PAIL	4.75 GALLON PAIL	1

DRIVEWAY COATINGS				
SKU DESCRIPTION	PRODUCT NUMBER	SIZE CODE	SIZE DESCRIPTION	QTY/CASE
KS Emulsion Driveway Sealer (3YR)	KS0073300	20 PAIL	4.75 GALLON PAIL	1
KS Emulsion Driveway Sealer (3YR)	KS0073300	27 DRUM	55 GALLON DRUM	1
KS Emulsion Driveway Sealer & Filler (5YR)	KS0073600	20 PAIL	4.75 GALLON PAIL	1
KS Emulsion Driveway Sealer & Filler (5YR)	KS0073600	27 DRUM	55 GALLON DRUM	1
KS Premium Emulsion Driveway Sealer & Filler (7YR)	KS0073900	20 PAIL	4.75 GALLON PAIL	1
KS Premium Emulsion Driveway Sealer & Filler (7YR)	KS0073900	27 DRUM	55 GALLON DRUM	1
KS Pourable Driveway Crack Filler	KS0075100	16 GAL	115 OZ / 0.9 GALLON	4
KS Trowel Grade Crack Filler	KS0075200	16 GAL	115 OZ / 0.9 GALLON	4

